

Surface Downlight

DWR115-MD-SF-C-30W



DWR115-MD-SF-C-30W.png

Source	LED Bridgelux
Connection	Wire
Gr. Power	30W ±5%
Input Voltage	AC85-277V
Driver	Kegu; Lifud
Control (standard)	Not dim.
Dimming option	Triac dim.; 0-10V dim.; DALI
Beam Angle (°)	15/30/45
CCT (Kelvins)	2700°K; 3000°K; 4000°K; 5000°K; 6500°K; 5700°K
Lumens	2900-3100
Luminaire efficiency	103Lm/W
CRI (standard)	>80Ra
for option	>90Ra; >97Ra
Fixture Color	White; Black
Cover	Lens
Dimensions	dia 73*108mm
Protection Rating	IP65
Electrical Class	Class II
Lifetime	>50.000h
Warranty	3 Years

Other

reflector color for choice: White, Black, Silver, Gold, Rose gold; 5 years warr. For option

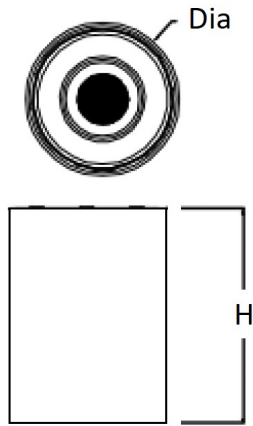
Standard Packing Details

Unit Volum (CBM)	0,00259
Unit GW (kg)	0
Qty per carton	18

Surface Downlight

DWR115-MD-SF-C-30W

Sizes drawing

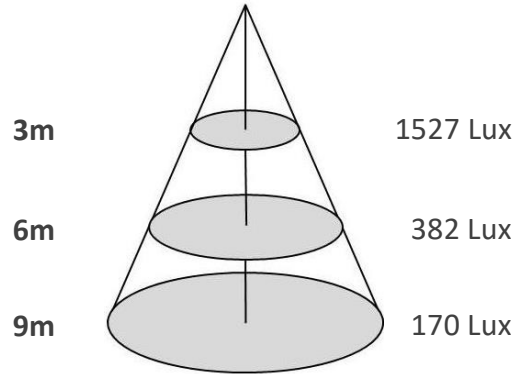


DWR115-MD-SF-C-30W.drw

in mm

Illumination Diagram

3100Lm with 30° beam



DWR115-MD-SF-C-30W.lux



Reflector

- W White
- B Black
- CH Chrome
- BN Brushed Nickel
- BB Brushed Brass