

**Surface Downlight**

**DWR115-MC-SF-C-30W**



<b>Source</b>	LED Osram; Cree; Bridgelux; Citize
<b>Connection</b>	Wire
<b>Gr. Power</b>	30W ±5%
<b>Input Voltage</b>	AC85-277V
<b>Driver</b>	Kegu; Lifud
<b>Control (standard)</b>	Not dim.
<b>Dimming option</b>	Triac dim.; 0-10V dim.; DALI
<b>Beam Angle (°)</b>	45
<b>CCT (Kelvins)</b>	2700°K; 3000°K; 4000°K; 5000°K; 6500°K; 5700°K
<b>Lumens</b>	2900-3100
<b>Luminaire efficiency</b>	103Lm/W
<b>CRI (standard)</b>	>80Ra
<b>for option</b>	>90Ra; >97Ra
<b>Fixture Color</b>	White; Black
<b>Cover</b>	Clear; Louver
<b>Dimensions</b>	Dia116*B150mm
<b>Protection Rating</b>	Indoor Use
<b>Electrical Class</b>	Class II
<b>Lifetime</b>	>50.000h
<b>Warranty</b>	3 (Years)

**Other**

Flicker free driver; Tridonic or Philips Driver; Reflector cup: Black, White, Chrome, Brushed Nickel, Brushed Brass

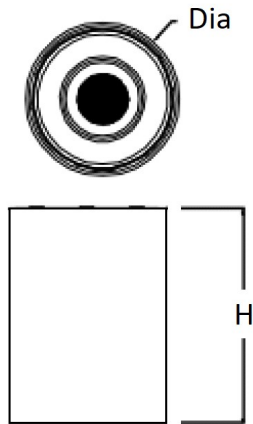
**Standard Packing Details**

<b>Unit Volum (CBM)</b>	0,00395
<b>Unit GW (kg)</b>	0
<b>Qty per carton</b>	18

## Surface Downlight

### DWR115-MC-SF-C-30W

Sizes drawing

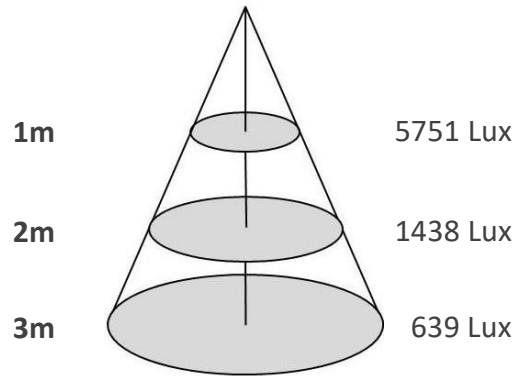


DWR115-MC-SF-C-30W.drw

in mm

Illumination Diagram

3100Lm with 45° beam



DWR115-MC-SF-C-30W.lux

## Reflector

- W White
- B Black
- CH Chrome
- BN Brushed Nickel
- BB Brushed Brass